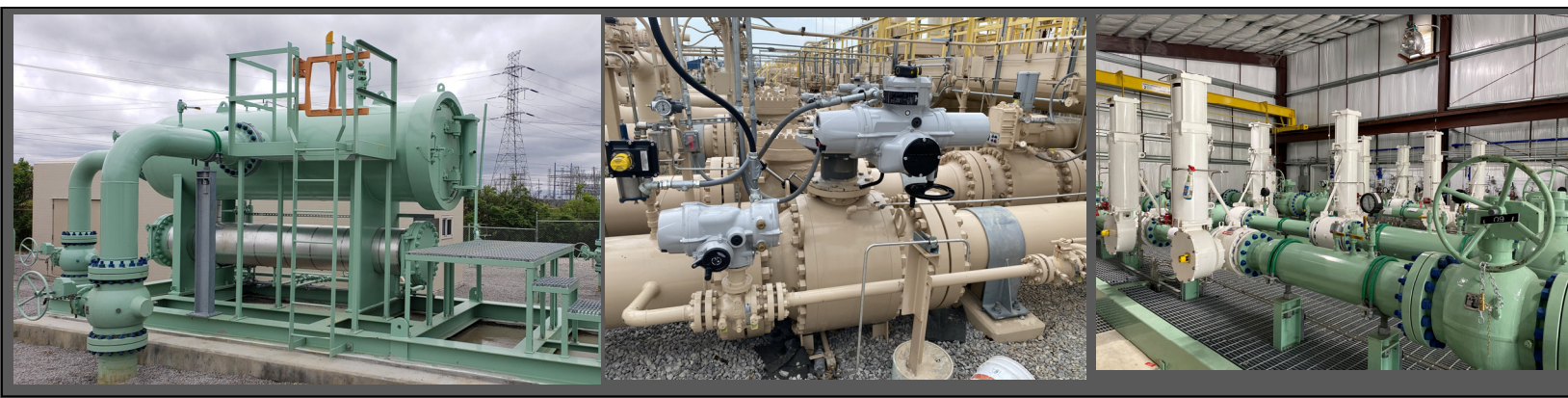


Serving the energy industry since 1990



# 2024 Product Line Card

Precision Pipeline Equipment, Inc.  
253 Walnut Street  
Houston, PA 15342  
724-746-5427  
Fax: 724-746-5428  
Email: [sales@precisionpipeline.com](mailto:sales@precisionpipeline.com)  
<http://www.precisionpipeline.com>



## ABB

ABB Model 8200 NGC Portable and Stationary Gas Chromatograph, PGC5000 Process Chromatograph



## ABB

µFLOG5, XFCG5, XFCG4-6200/6201EX, Flow Computers, XRCG5 and RMC-100 Remote Controllers & PLC



Genie® Sampling System components GPR & GP2 probes and membrane separators and filters



## Additel

CE Approved digital gauges, test pumps, automatic calibrators, test hoses and fitting kits



Indirect Heaters, Separators, Filter Separators, Glycol Dehydration & Mol Sieve Dehydration systems, Heater Treaters, H2S and CO2 plants



**QRC Valve Distributors** is a master distributor of downstream industrial globe, gate, check and butterfly valves.



## CARSONITE® COMPOSITES

Fiberglass and round pipeline markers, pipeline signs and decals, Cathodic test stations



## CVS

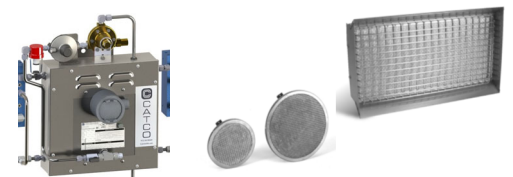
Controls Ltd.

ET, EWT Globe style & segmented ball type control valves



## CATCO CATALYTIC HEATERS COMPANY

FM/CSA Approved catalytic heaters, instrument gas heaters, pipeline packs and enclosures



ElCor® Plus Index Mounted Volume Correctors, DATCOM, pressure monitors and Pulse Accumulators



## FITOK

Dual Fractional Ferrule tube fittings, pipe fittings, tubing valves, quick connectors, hoses, sample cylinders



Thermoelectric generators, TEG and Solar Hybrid EZ Air compressed air systems, MX off grid power generators#



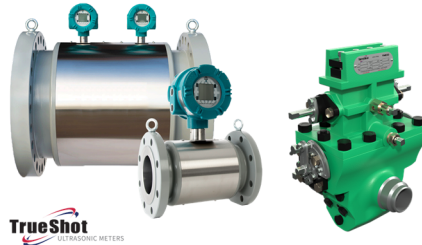
**Representative in Michigan and Indiana**



# Product Lines



1.5M—56M, 1-1/2" - 8", ANSI 150# and 300/600# cartridge style rotary meters, mechanical and index drive options. Test Benches/provers.#



Sureshot, Orifice Meter, Trueshot, LPM-zd ultrasonic meters, available in 2" - 36" line sizes, ANSI 150-2500#, Easy to use software, 6 path design API & AGA compliant.



Model-1® steel gate valve, Polyball® polyethylene valves, steel ball valves, manifold valves, Innogaz® Electrofusion, Zunt Insulating Joints



## Premium Valve Distributor

Orbit, WKM 370D6 & Perar API-6D, Ball Valves, Wheatley Check Valves, Franklin Double Block & Bleed Plug Valve, API-6D



## Fluid Systems and Controls Division

IQ3 electric, CP/GP pneumatic actuators, direct gas and gas over oil actuators



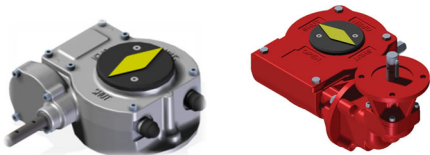
## Process and Instruments Division

CVA and CMA high resolution control valve actuator, K-Tork® vane actuators, Soldo® position transmitters and switch boxes & Fairchild® PAX-1 and I-P & regulators #

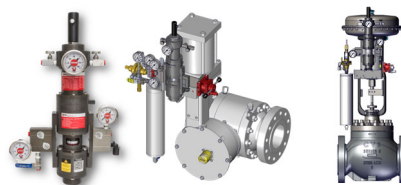


## Gears Division

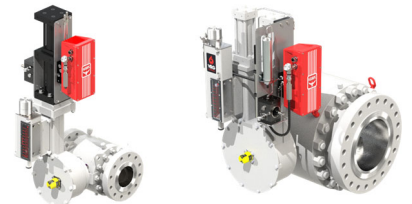
Gears and stem extensions for valves vane actuators#



VRG Non Venting VPC Pilot Controllers, VMO Manual Control Valves, Globe and Rotary Style Control Valves, ST1-ST-4 Stealth® quiet trim control valves#



## Zero Emission EH Control Valves



Norval® direct acting & Aperflux® pilot operated flexible element, Reflux®-Reval® plug & seat top entry high performance regulators and slam shut valves



FE, FEX and Cirval® residential and commercial regulators#



Tunable Diode Laser Moisture SS500, J22 H2O, CO2, OX5500 Oxygen and SS-2100 H2S Analyzers#



# Product Lines

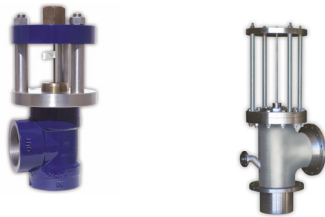


## MUSTANG®

Pony and Mustang Sample Conditioning Systems, Analyzer Distribution Panels, Heated Regulators#



Rupture Pin and Buckling Pin ESD valves, relief valves and safety shutoff valves#



Pilot Operated Natural Gas and Liquid Regulators



Pre-engineered molded fiberglass buildings and enclosures. Turnkey shelter applications#



Industry leader in UPS power supplies, solar power systems, battery racks, integrated RTU & communications systems, skid mounted enclosures and bus stop



Dry gas and coalescing filters, ANSI 150#-900# replacement elements for all manufacturers.#



RTU and Analyzer Buildings



Digital and analog pressure gauges, test gauges, ATE handheld calibrators, dead weight testers



Z4000 and Z5000 Stationary & Portable Hydrocarbon Dewpoint Analyzers#



Precision Pipeline Equipment, Inc.  
 253 Walnut Street  
 Houston, PA 15342  
 724-746-5427  
 Fax: 724-746-5428  
 Email: [sales@precisionpipeline.com](mailto:sales@precisionpipeline.com)  
[www.precisionpipeline.com](http://www.precisionpipeline.com)



Experienced, reliable service to the energy industry since 1990