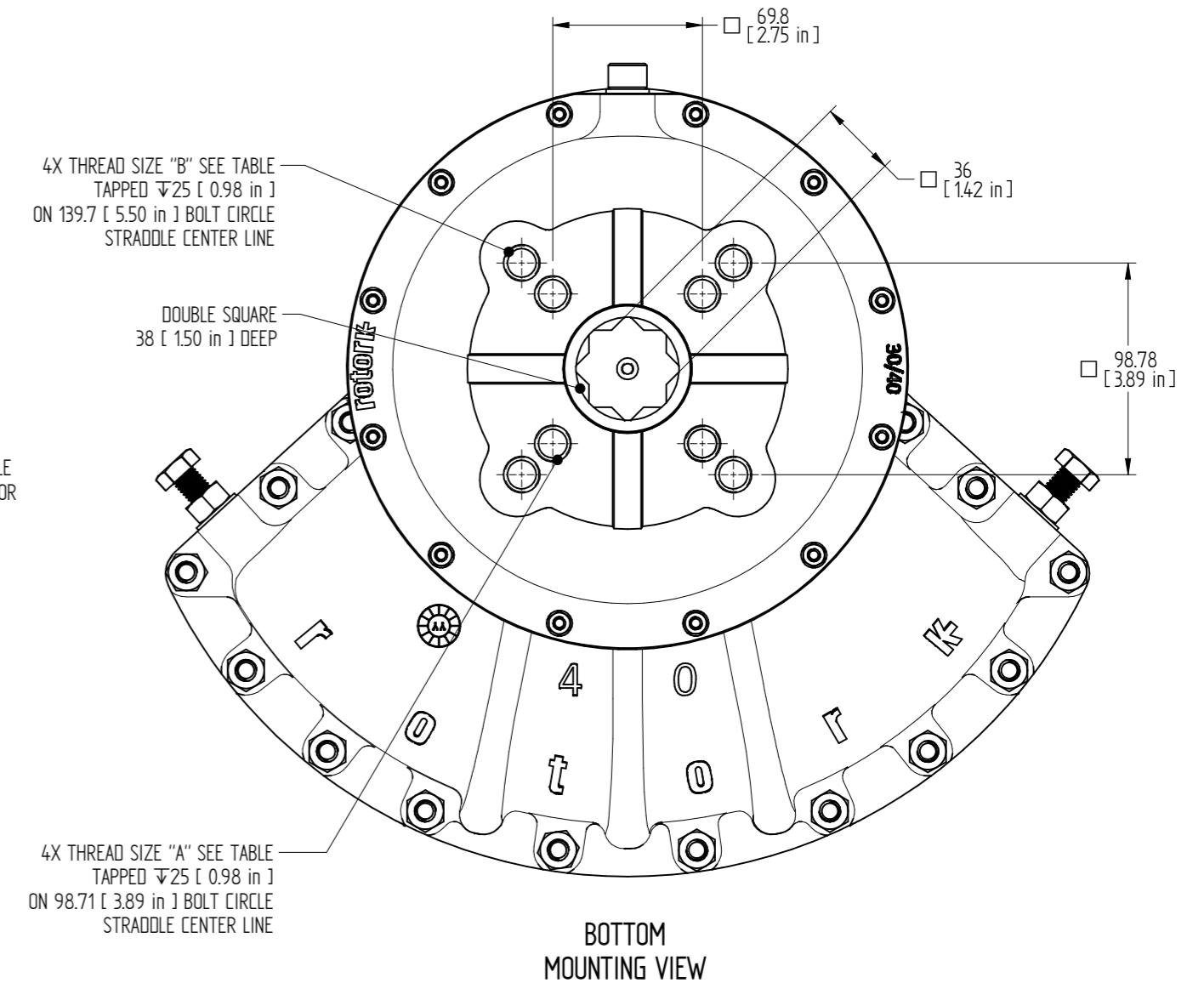
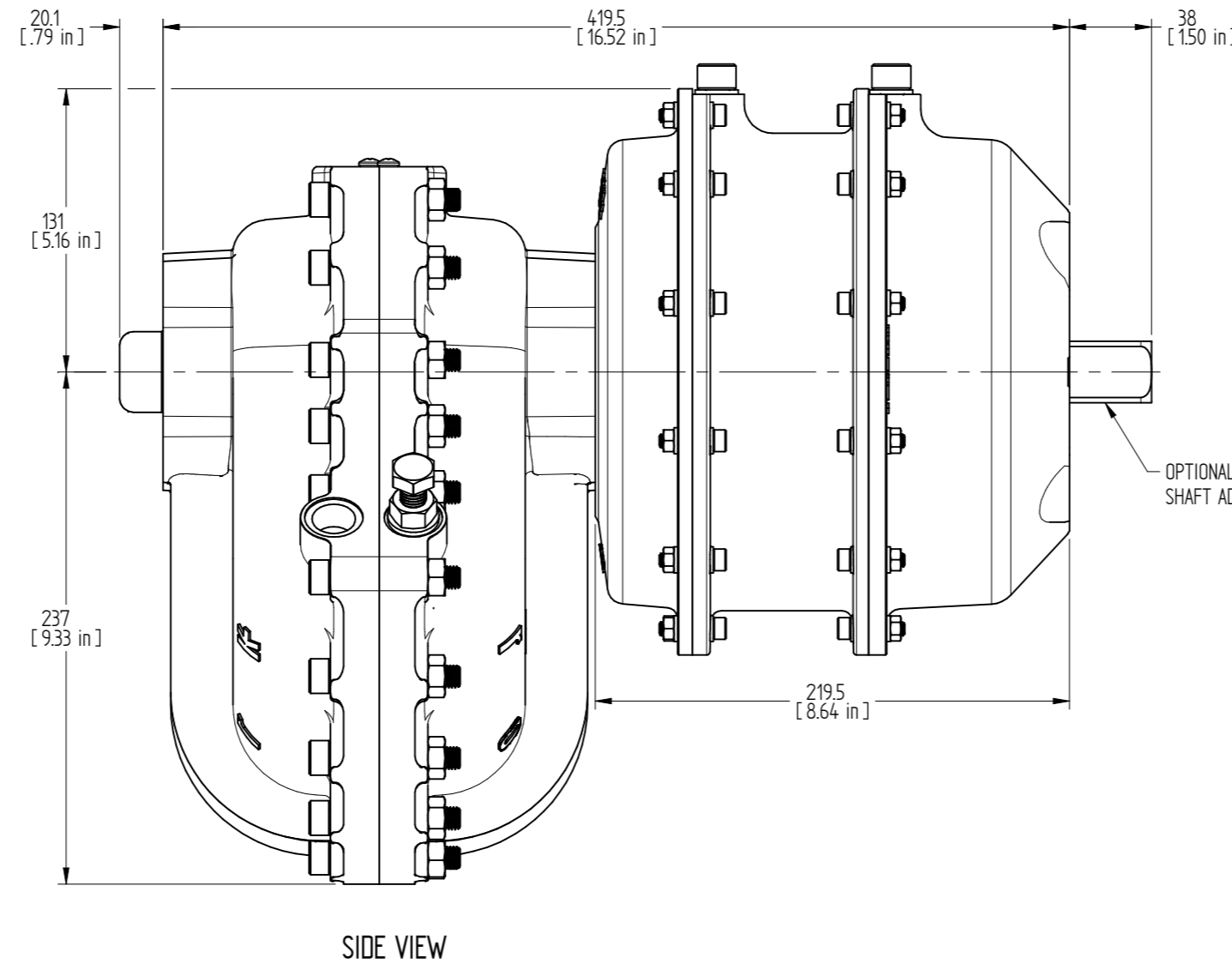
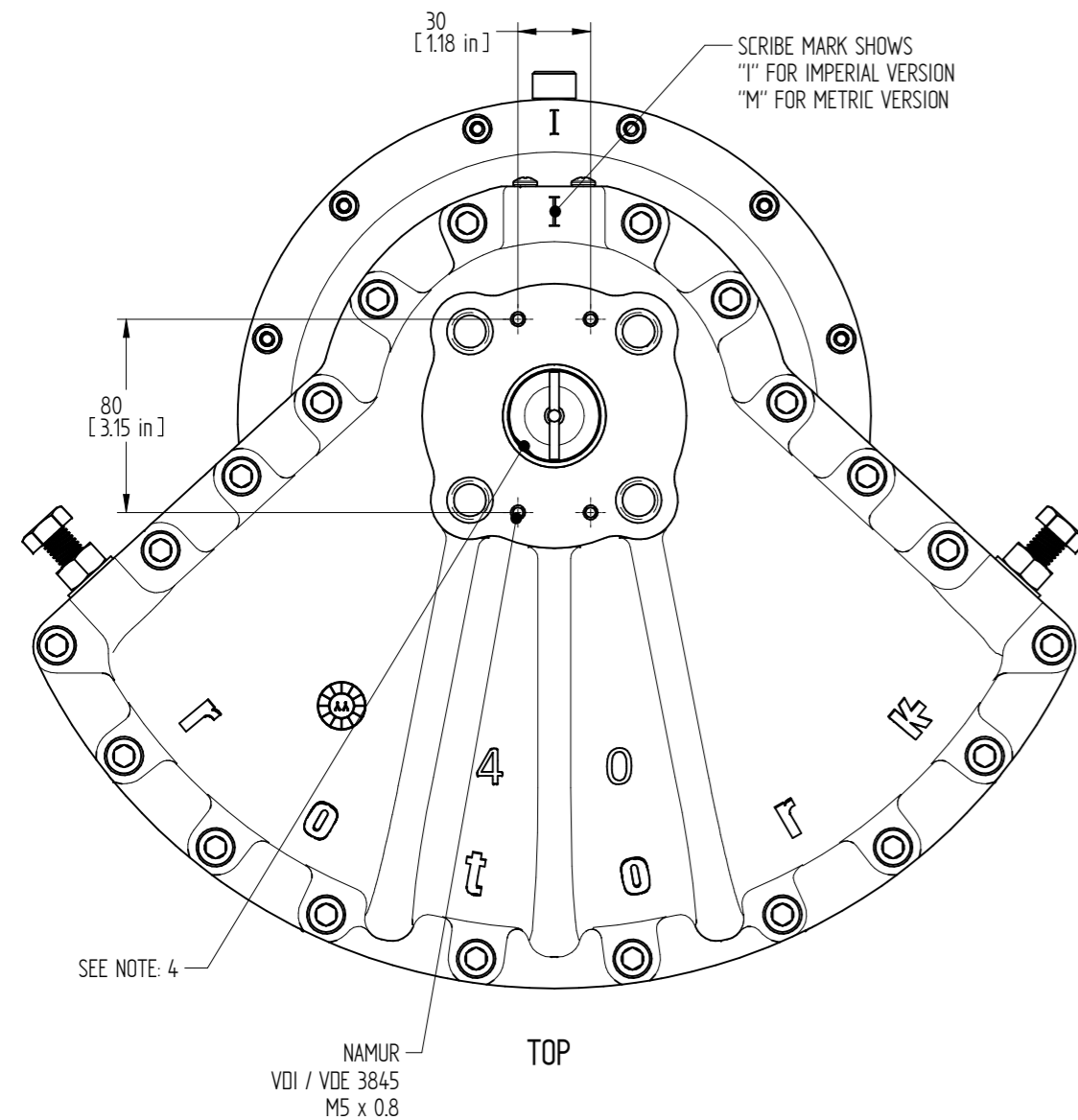
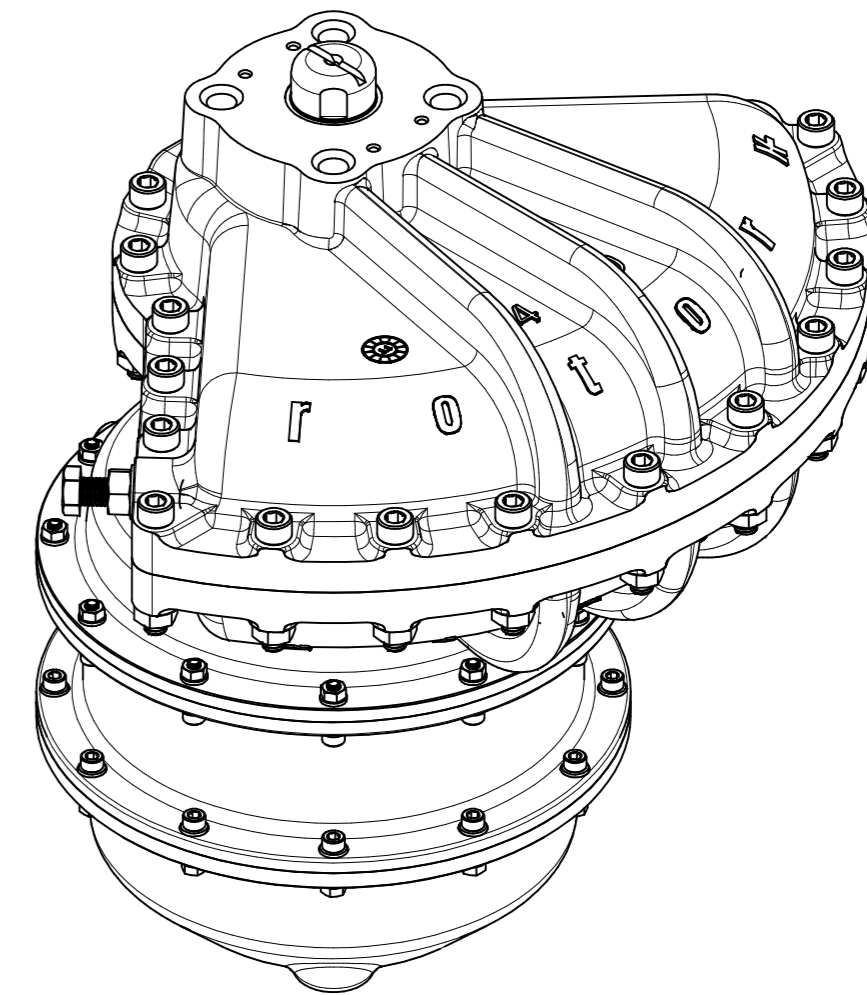
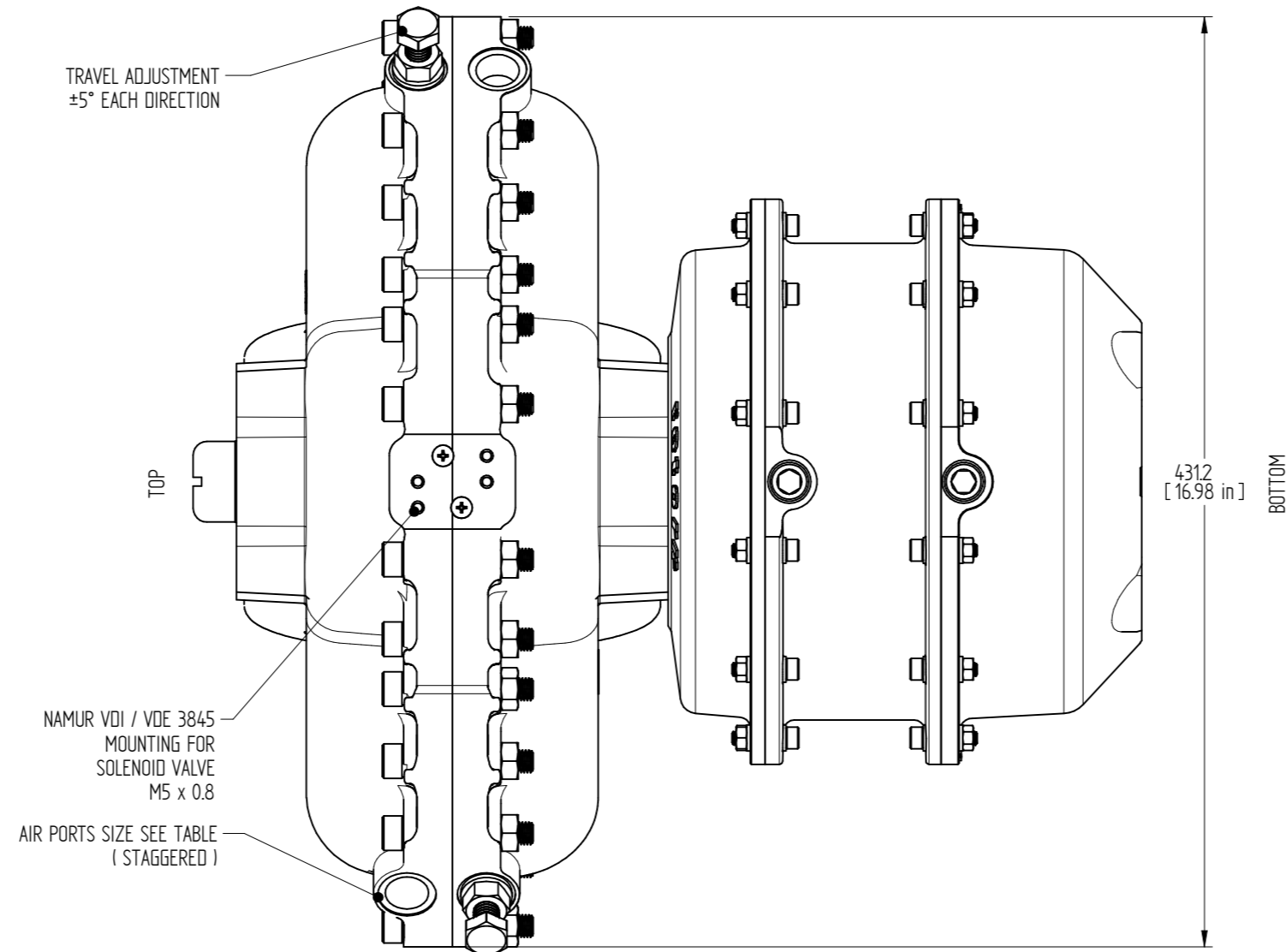
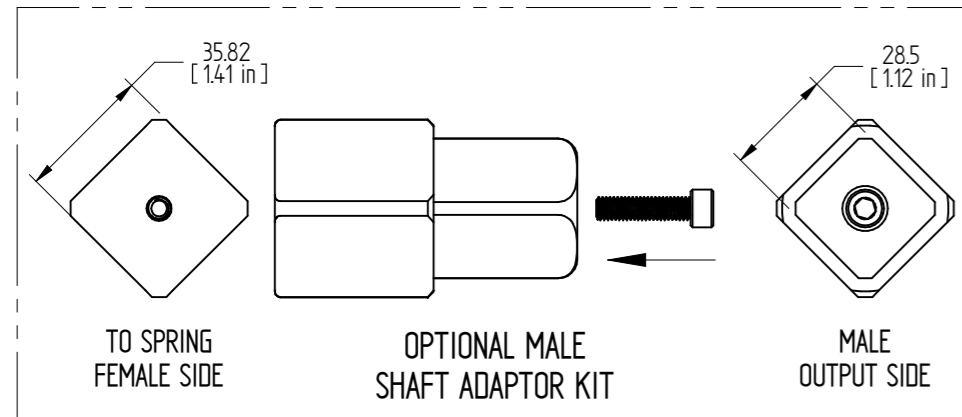


Drawing Number
0000000213

- NOTES:
1. MAX. ALLOWABLE OPERATING PRESSURE (MAOP) = 10 BAR (150 PSIG)
 2. WARNING - SEE ROTORK INSTALLATION, OPERATION & MAINTENANCE MANUAL BEFORE MOUNTING, INSTALLING OR SERVICING.
 3. SPECIFY SUPPLY AIR PRESSURE FOR SPRING-RETURN ACTUATORS.
 4. ACTUATOR SHOWN IN FULL CW POSITION, FLAT ON SHAFT SHOWS VANE LOCATION POSITION (SPRING END / AIR START).
 5. SPECIFY SPRING DIRECTION, CW STANDARD.
 6. WEIGHT 48.86 KG (107.71 LB)

	IMPERIAL	METRIC
THREAD SIZE "A"	5/8-11 UNC	M16 x 2
THREAD SIZE "B"	5/8-11 UNC	M16 x 2
AIR PORT SIZE	1/2-14 NPT	G1/2

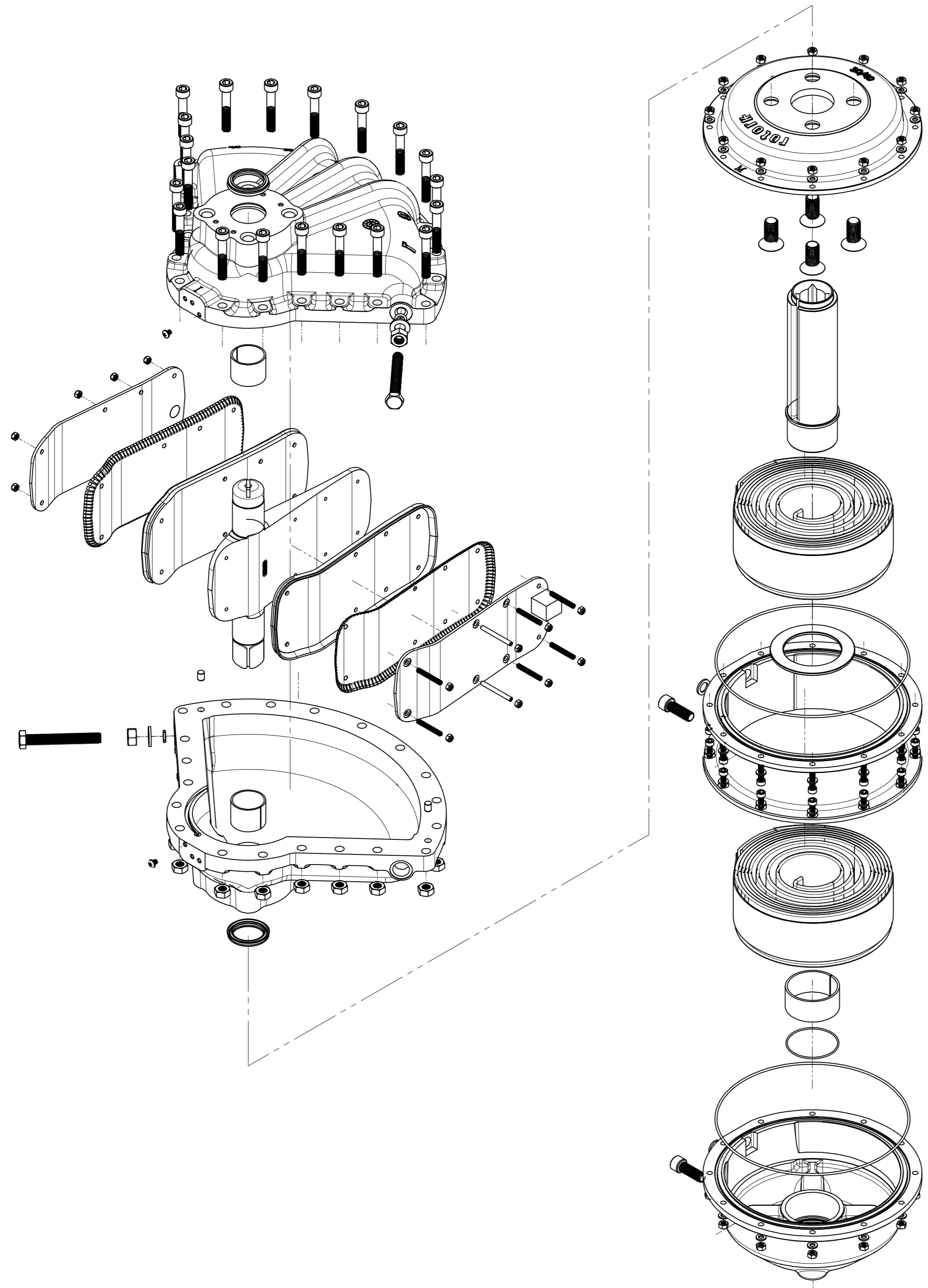


C	K.SEKAR	K.PRICE	04-AUG-2016	DIM. 4312 WAS 440 (B8)	
B	K.SEKAR	K.PRICE	18-FEB-2016	EXPLODED VIEW ADDED IN SHEET2	
A	K.SEKAR	K.PRICE	12-FEB-2016	PRE RELEASE	
Rev	ECN	Revised	Approved	Date	Change Description

rotork
Dallas, Texas - USA
www.rotork.com

Document type		GENERAL ARRANGEMENT		Title	
Scale 1:3		Dimensions in mm		KT-40-SR IMPERIAL / METRIC AIR PORTS & MOUNTING HOLES	
Created	K.SEKAR	12-FEB-2016	12-FEB-2016	Drawing Number	0000000213
Checked	S.SUDHIR	12-FEB-2016	12-FEB-2016	Sheet	1 of 2
Approved	K.PRICE	12-FEB-2016	12-FEB-2016	Size	A2

Drawing Number 000000213 Rev C



<p>Dallas, Texas - USA www.rotork.com</p>	<p>Document type GENERAL ARRANGEMENT</p>		<p>Title KT-40-SR IMPERIAL / METRIC AIR PORTS & MOUNTING HOLES</p>	
	<p>Dimensions in mm Scale 1/4</p>		<p>Created K.SEKAR 12-FEB-2016 Checked S.SUDHIR 12-FEB-2016 Approved K.PRICE 12-FEB-2016</p>	
<p>Created K.SEKAR 12-FEB-2016</p>			<p>Drawing Number 000000213</p>	
<p>Checked S.SUDHIR 12-FEB-2016</p>			<p>Sheet 2 of 2 Size A2</p>	
<p>Approved K.PRICE 12-FEB-2016</p>			<p>Rev C</p>	

Rev D