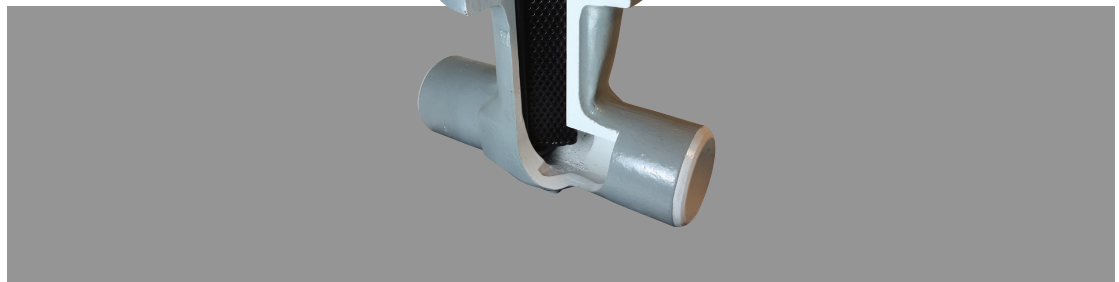


Kerotest T-Strainers

Carbon Steel



Product Brief

These T-Strainers, which provide up to 30 percent larger basket area, are manufactured of carbon steel to ensure strength, precision and long life. Available in standard sizes from 1-inch through 6-inch, ANSI 150/300 pound, Kerotest can also deliver T-Strainers in larger sizes as needed.

Kerotest T-Strainers are interchangeable in valves with Standard ANSI B16.5 and 16.10 end-to-end dimensions. They also feature an elastomeric basket seal that eliminates potential leakage between the basket and the body, as well as a reversible basket that readily accommodates reverse flow applications.

Features/Benefits

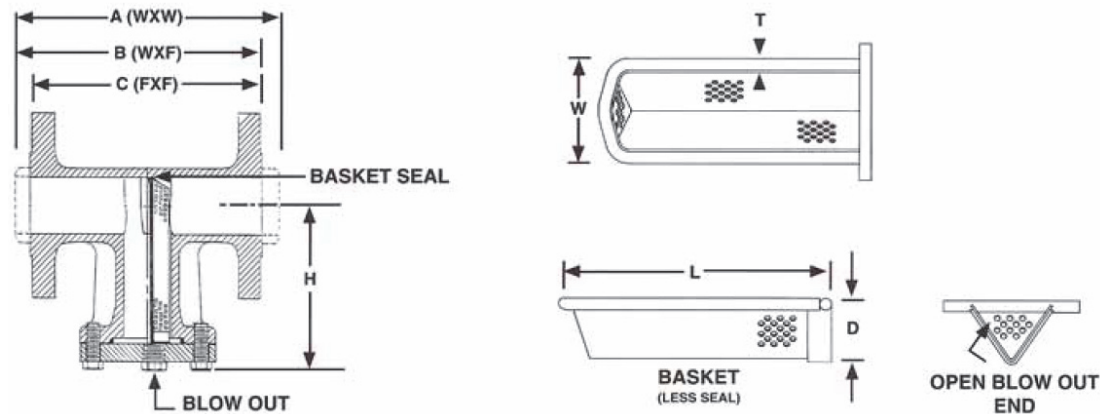
- **Body:** Steel, ASTM A-216 Gr. WCB
- **Cover:** Steel, ASTM A36
- **Bolts:** SAE Gr. 8 carbon steel
- **Cover Seal:** Buna-N
- **Basket:** 300-Series stainless steel 1/8" perforation on 3/16" centers
- **Mesh:** Optional—40 mesh from stock (300-Series stainless steel)
- **Connections:** Weld end, weld-by-flange, flange-by-flange, screwed
- **Options include:**
 - Short weld ends
 - Flat-faced flanges
 - Screwed ends
 - Special coatings
 - Viton™ trim



An Employee-Owned Company

Kerotest T-Strainers - Carbon Steel

Dimensions



Dimensions in Inches

Pipe Size	Part Number ①	ANSI	A	B	C	H	D (Approx.)	L (Approx.)	T (Approx.)	W (Approx.)	B/O Size
1	TST-100	300	5	—	—	4-15/32	1-1/8	4-25/32	1/4	1-21/32	3/8
1-1/4	TST-125	300	5	—	—	4-15/32	1-1/8	4-25/32	1/4	1-21/32	3/8
2	TST-215	150	8-1/2	7-3/4	7	5-7/8	1-3/8	5-23/32	1/4	2-7/32	1/2
	TST-230	300	8-1/2	8-1/2	8-1/2	5-7/8	1-3/8	5-23/32	1/4	2-7/32	1/2
3	TST-315	150	11-1/8	9-9/16	8	7-7/16	1-7/8	7-3/4	1/4	3-5/8	1/2
	TST-330	300	11-1/8	11-1/8	11-1/8	7-7/16	1-7/8	7-3/4	1/4	3-5/8	1/2
4	TST-415	150	12	10-1/2	9	8	2	8-11/16	1/4	4-5/8	1/2
	TST-430	300	12	12	12	8	2	8-11/16	1/4	4-5/8	1/2
6	TST-615	150	15-7/8	13-3/16	10-1/2	10-11/16	2-3/4	12-5/16	3/8	7-3/8	1/2
	TST-630	300	15-7/8	15-7/8	15-7/8	10-11/16	2-3/4	12-5/16	3/8	7-3/8	1/2

① To above part numbers, add for Weld end—WW, Weld by Flange—WF, Flange by Flange—FF, Screwed end—SC (Example: TST-415-FF).

Standard Basket Material for T-Strainer

Mesh	Wire Diameter		Width of Opening		% of Opening	Material Range
	Inch	mm	Inch	mm		
20	0.016	0.406	0.034	0.86	46.2%	300 Series Stainless Steel
40	0.010	0.254	0.015	0.38	36.0%	300 Series Stainless Steel
60	0.0075	0.191	0.009	0.23	30.5%	300 Series Stainless Steel
80	0.0055	0.140	0.007	0.19	31.4%	300 Series Stainless Steel
100	0.0045	0.114	0.006	0.14	30.3%	300 Series Stainless Steel

Standard Weight for T-Strainer

NPS	End Configuration	ANSI Class	Approximate Weight (lbs)	NPS	End Configuration	ANSI Class	Approximate Weight (lbs)
2	Weld End	150	16	4	Weld End	150	45
2	Weld by Flange	150	21	4	Weld by Flange	150	55
2	Flange	150	26	4	Flange	150	63
2	Weld by Flange	300	23	4	Weld by Flange	300	65
2	Flange	300	29	4	Flange	300	84
3	Weld End	150	35	6	Weld End	150	94
3	Weld by Flange	150	41	6	Weld by Flange	150	106
3	Flange	150	49	6	Flange	150	116
3	Weld by Flange	300	46	6	Weld by Flange	300	128
3	Flange	300	56	6	Flange	300	140

All product names referenced herein are trademarks of their respective companies.



Kerotest Manufacturing Corp.
 5500 Second Avenue • Pittsburgh, PA 15207
 412.521.4663 • Fax: 412.521.5990
 www.Kerotest.com • Sales@Kerotest.com