

Serving the energy industry since 1990



# Product Line Card

Precision Pipeline Equipment, Inc.  
253 Walnut Street  
Houston, PA 15342  
724-746-5427  
Fax: 724-746-5428

Email: [sales@precisionpipeline.com](mailto:sales@precisionpipeline.com)  
<http://www.precisionpipeline.com>



## ABB

ABB Model 8200 NGC Portable and Stationary Gas Chromatograph, PGC5000 Process Chromatograph



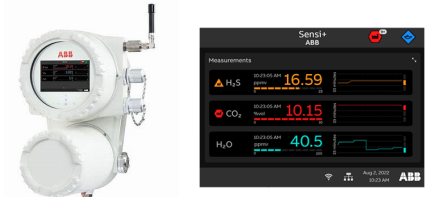
## ABB

μFLOG5, XFCG5, XFCG4-6200/6201EX, Flow Computers, XRCG5 and RMC-100 Remote Controllers & PLC



## ABB

ABB Sensi+ Cutting Edge TDL Laser H2O, H2S, CO2 and O2 Gas Analyzer



## Additel

CE Approved digital gauges, test pumps, automatic calibrators, test hoses and fitting kits



## A+

geniefilters.com

Genie® Sampling System components GPR & GP2 probes and membrane separators and filters



## PROCESS GROUP C5

Indirect Heaters, Separators, Filter Separators, Glycol Dehydration & Mol Sieve Dehydration systems, Heater Treaters, H2S and CO2 plants



## CARSONITE COMPOSITES

Fiberglass and round pipeline markers, pipeline signs and decals, Cathodic test stations



## CVS

Controls Ltd.

ET, EWT Globe style & segmented ball type control valves



## CATCO CATALYTIC HEATERS COMPANY

FM/CSA Approved catalytic heaters, instrument gas heaters, pipeline packs and enclosures



## elgas s.r.o.

ElCor® Plus Index Mounted Volume Correctors, DATCOM, pressure monitors and Pulse Accumulators



## FITOK

Dual Fractional Ferrule tube fittings, pipe fittings, tubing valves, quick connectors, hoses, sample cylinders



## GLOBAL power technologies

Thermoelectric generators, TEG and Solar Hybrid EZ Air compressed air systems, MX off grid power generators#



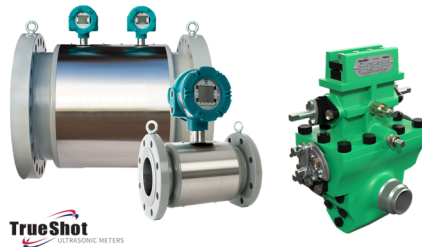
Representative in SW Ohio Michigan and Indiana



# Product Lines



1.5M—56M, 1-1/2" - 8", ANSI 150# and 300/600# cartridge style rotary meters, mechanical and index drive options. Test Benches/provers.#



Sureshot, Orifice Meter, Trueshot, LPM-zd ultrasonic meters, available in 2" - 36" line sizes, ANSI 150-2500#, Easy to use software, 6 path design API & AGA compliant.



Model-1® steel gate valve, Polyball® polyethylene valves, steel ball valves, manifold valves, Innogaz® Electrofusion, Zunt Insulating Joints



## Premium Valve Distributor

Orbit, WKM 370D6 & Perar API-6D, Ball Valves, Wheatley Check Valves, Franklin Double Block & Bleed Plug Valve, API-6D



## Fluid Systems and Controls Division

IQ3 electric, CP/GP pneumatic actuators, direct gas and gas over oil actuators



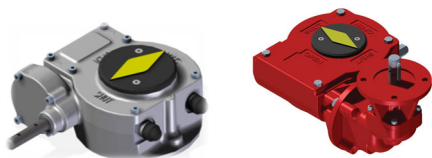
## Process and Instruments Division

CVA and CMA high resolution control valve actuator, K-Tork® vane actuators, Soldo® position transmitters and switch boxes & Fairchild® PAX-1 and I-P & regulators #

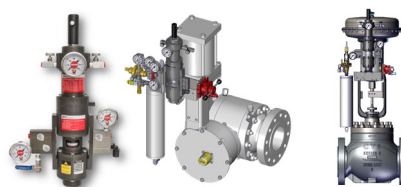


## Gears Division

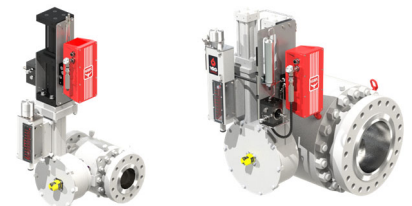
Gears and stem extensions for valves vane actuators#



VRG Non Venting VPC Pilot Controllers, VMO Manual Control Valves, Globe and Rotary Style Control Valves, ST1-ST-4 Stealth® quiet trim control valves#



## Zero Emission EH Control Valves



Norval® direct acting & Aperflux® pilot operated flexible element, Reflux®-Reval® plug & seat top entry high performance regulators and slam shut valves



FE, FEX and Cirval® residential and commercial regulators#



**QRC Valve Distributors** is a master distributor of downstream industrial globe, gate, check and butterfly valves.



POYAM | ORBIT | NEWCO | DOUGLAS CHERO | DSI | ATOMAC | DURCO | L&T | XANIK



# Product Lines

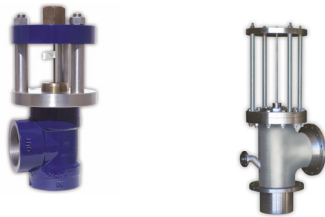


## MUSTANG®

Pony and Mustang Sample Conditioning Systems, Analyzer Distribution Panels, Heated Regulators#



Rupture Pin and Buckling Pin ESD valves, relief valves and safety shutoff valves#



Pilot Operated Natural Gas and Liquid Regulators



Pre-engineered molded fiberglass buildings and enclosures. Turnkey shelter applications#



Industry leader in UPS power supplies, solar power systems, battery racks, integrated RTU & communications systems, skid mounted enclosures and bus stop



Dry gas and coalescing filters, ANSI 150#-900# replacement elements for all manufacturers.#



RTU and Analyzer Buildings

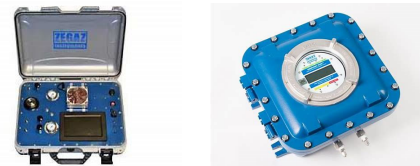


**ENDURO**  
 PIPELINE SERVICES, INC.

Enduro pipeline pigs, disc, caliper, foam, brush and cup designs and Pig Popper® pig signal devices.#



Z4000 and Z5000 Stationary & Portable Hydrocarbon Dewpoint Analyzers#



Precision Pipeline Equipment, Inc.  
 253 Walnut Street  
 Houston, PA 15342  
 724-746-5427  
 Fax: 724-746-5428  
 Email: [sales@precisionpipeline.com](mailto:sales@precisionpipeline.com)  
[www.precisionpipeline.com](http://www.precisionpipeline.com)



Experienced, reliable service to the energy industry since 1990