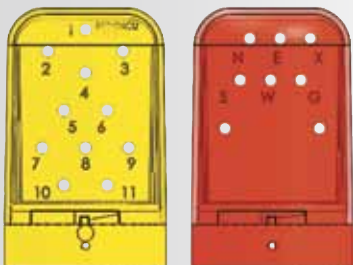




CARSONITE TEST STATIONS

NEW Easy terminal access, durable polycarbonate housings.
Available with or without post, enhancer, and T-anchor



11-hole
Cathodic

8-hole
Telecom



Twist lock closure.

Carsonite test stations provide test points for monitoring electric currents and potentials. Our test stations, with twist on/off closing feature, allow easy access to talk terminals, alarm terminals, pressure monitors, resistors, gas valves, ground bonds, and surge arrestor terminal blocks.

Choose from 11-hole cathodic boards or 8-hole telecom boards. These durable polycarbonate test stations are available in yellow, orange, blue, and red.

These highly visible test stations are designed to fit onto Carsonite's 3.5" posts and can be quickly and easily field installed to any 3.5" OD post. With a 3.75" OD and smooth domed appearance, the Carsonite Test Stations are designed to blend in with Carsonite's LineMarker™ to deter vandals.

Hardware kits sold separately. See page 4.



Rivets (2 supplied) hold Test Station to post.



How to order

TEST STATION AND CAP ONLY

CTS10 – Telecom Board

CTS15 – Cathodic Board

Add color: 02, yellow; 04, orange;
05, red; 08, blue

Examples: CTS1004 – Orange Telecom
CTS1504 – Yellow Cathodic

TEST STATION WITH POST

CTS

Add Length (in): 072, 084, 096 standard

Add Post Color: 01 white standard

(other colors available)

Add T (Telecom) or C (Cathodic)

Add Test Station Color: 04 standard

Example: CTS07201T04

72" Unit with white post, orange
Telecom test station

TEST STATION WITH POST AND ENHANCER

CTS

Add Length (in): 072, 084, 096 standard

Add Post Color: 01 white standard

(see specifications below)

Add Enhancer Length: 18" or 24"

Add Enhancer Color: 04 standard

(see specifications below)

Add T (Telecom) or C (Cathodic)

Add Test Station Color: 04 standard

(see specifications below)

Example: CTS072011804T04

72" Unit, white post, 18" orange
enhancer, orange Telecom station

Specifications

Material
Width
Lengths
Colors

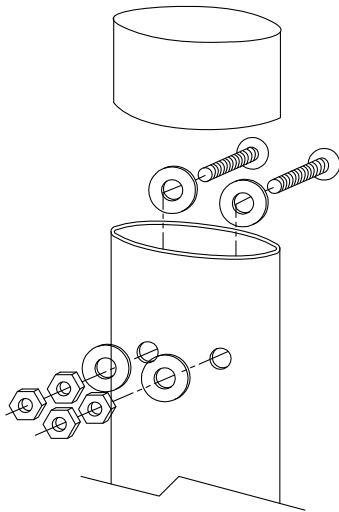
LineMarker: High-density Polypropylene
Post: 3.5" dia (8.89 cm); Enhancer: 3.75" dia. (9.53 cm)
72" (1.829 m), 84" (2.134 m); 96" (2.439 m)
Posts: White (01), Yellow (02), Orange (04)
Enhancers: Yellow (02), Orange (04), Red (05); Blue (08);
Test Stations: Yellow (02), Orange (04), Red (05); Blue (08);



VISI-POST™ TEST STATION

360-degree visibility

The Visi-Post Test Station is a 3.5" test station with two exterior access points and wire connections for cathodic protection testing and wire tracing.



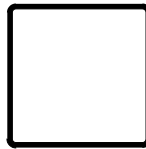
1/4" stainless steel round-head screws and hex nuts and nylon flat washers supplied, as illustrated.



PERMA-POST™

4x4 test station

Carsonite's Perma-Post Test Station is designed for durability. This 4" x 4" fiberglass test station is available with cathodic or telecom boards. It has ample room for internal components and application of 4 decals on the outside.



TUFF-CAT™

Most durable

Carsonite's most rugged utility marker houses two terminal access points and wire connections for cathodic protection testing or cable tracing. Ideal for locating and testing underground lines, the Tuff-Cat test station marker comes standard in yellow or orange. Optional #12 AWG wire can be installed at the factory.



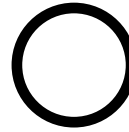
LITTLE VISI-POST™ (LVP) TEST STATION

NEW Compact test station

The Little Visi-Post Test Station is an economical solution for your testing needs. Like Carsonite's standard Visi-Post, the LCP features two exterior access points and connections



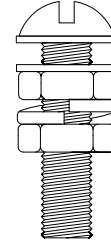
for cathodic protection or cable tracing, but is 2.25" in diameter. Terminal post hardware included.



HARDWARE KITS

For Cathodic Test Stations

1/4" 20 stainless steel, brass, or nickel coated brass hardware kits sold separately.



Each set contains:

- 1 - 1/4-20 x 1" screw
- 2 - nylon flat washers
- 1 - 1/4" lock washer
- 2 - 1/4-20 jam nuts

Part #	Description
TSHDW5B	5 sets, Brass
TSHDW5N	5 sets, Brass with nickel coating
TSHDW5S	5 sets, Stainless Steel
TSHDW6B	6 sets, Brass
TSHDW6N	6 sets, Brass with nickel coating
TSHDW6S	6 sets, Stainless Steel



Carsonite Composites is a Philips group brand.
19845 U.S. Highway 76, Newberry, South Carolina 29108
Toll-free: 1-800-648-7916 · Fax: 803-276-8940
www.carsonite.com